

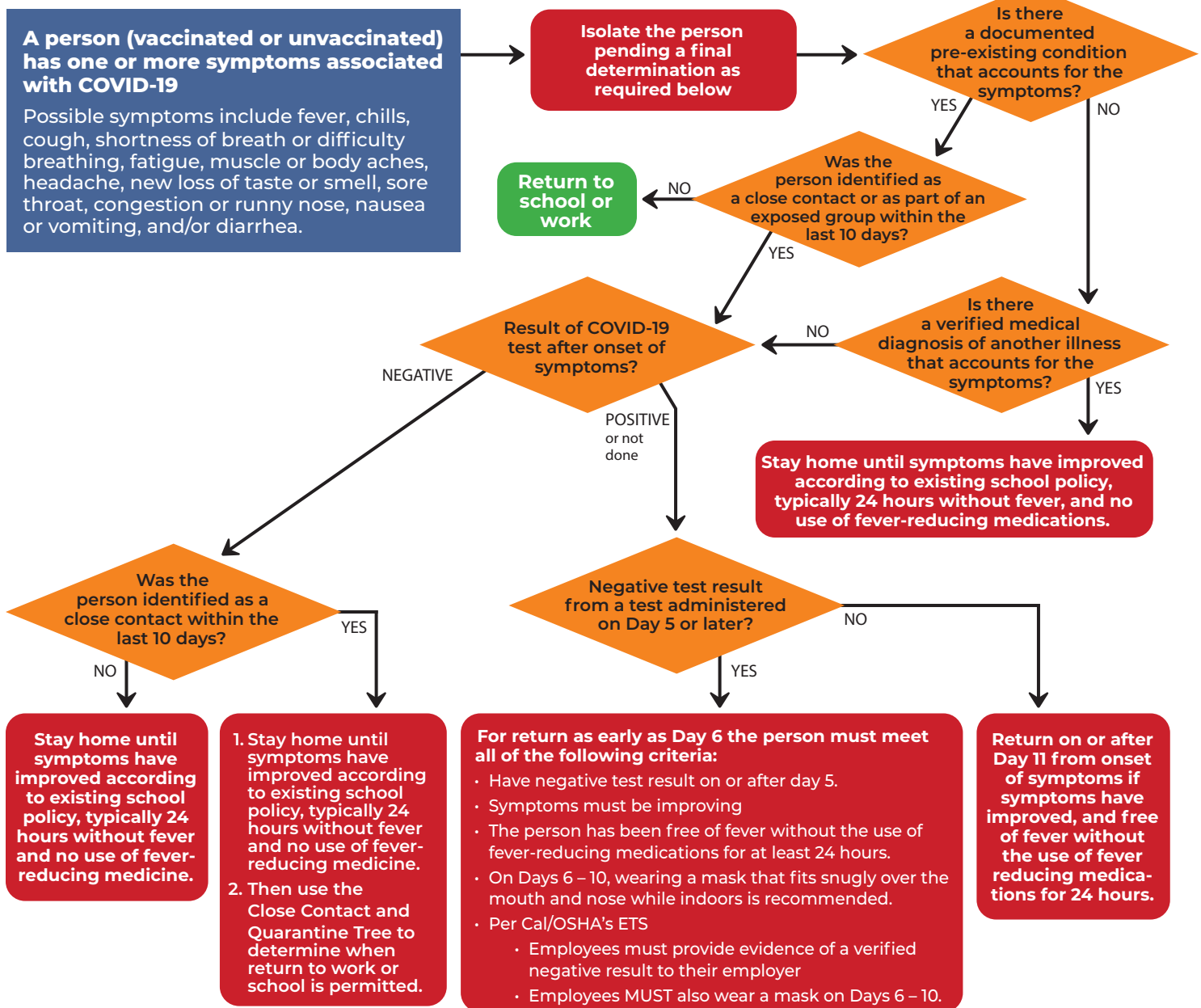
COVID-19 Decision Trees for K-12 Schools

Today's updates: Updates were made to clarify that schools are not required to verify student test results for return from isolation before Day 11 (page 1), or for student close contacts on Day 3, 4, or 5 (page 2), and that confirmation testing in response to symptoms is recommended, not required. (page 3).

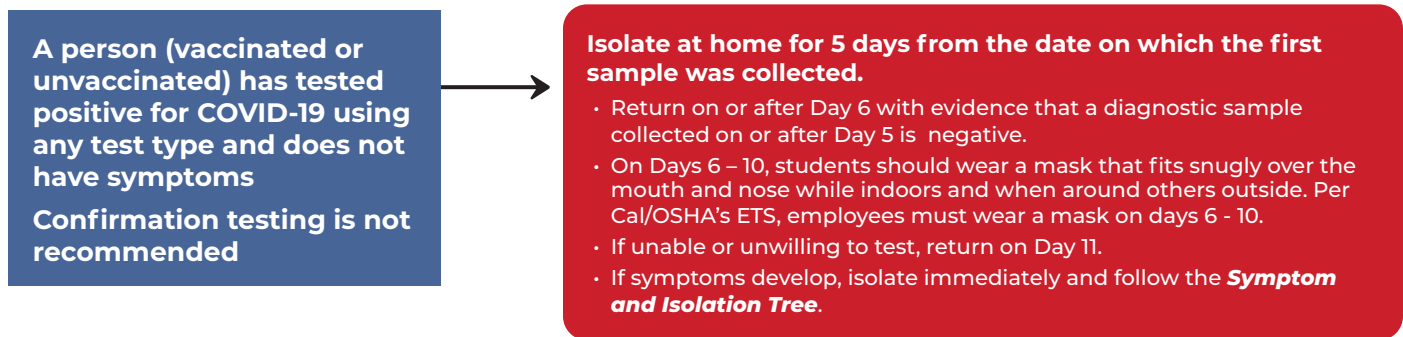
If the person...

- Has **symptoms**, use the **Symptom and Isolation Tree**
- Has **tested positive** and **does not have symptoms**, use the **Asymptomatic Positive Tree**
- Is identified as a **close contact** and **does not have symptoms**, use the **Close Contact and Quarantine Trees**

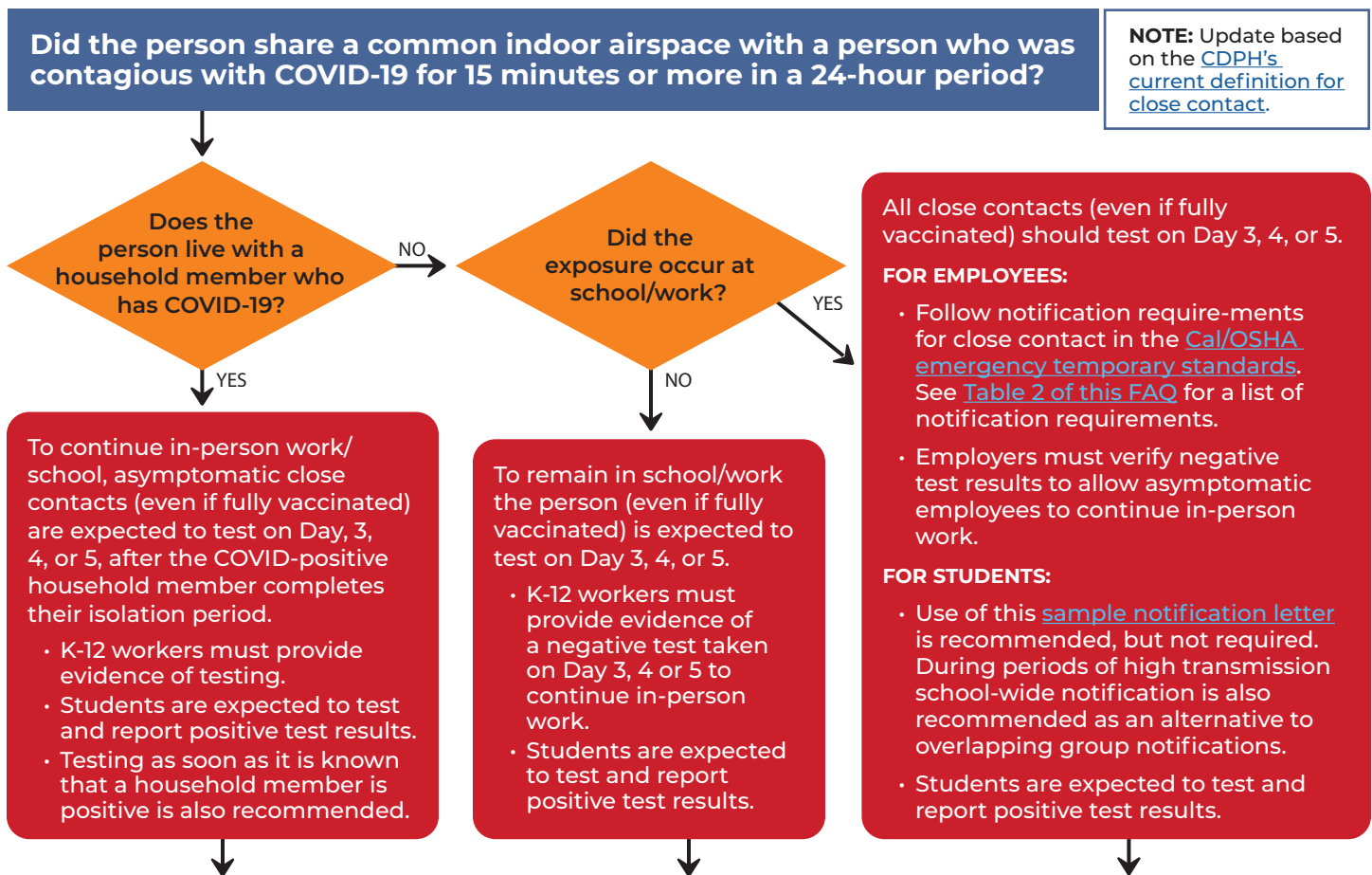
Symptom and Isolation Tree for Students and K-12 Workers



Asymptomatic Positive Tree for Students and K-12 Workers



Close Contact Tree for Students and K-12 Workers



Students and K-12 Workers:

- People who are within 90 days of a prior COVID-19 infection do not need to test.
- If the exposed person has [symptoms consistent with COVID-19](#), they must stay home, should get tested, and must follow the guidance in the Symptom and isolation tree on page 1.
- Students and employees who test positive must stay home and notify the school/employer of the positive test.

To continue to participate in school and extracurricular activities, **student close contacts** should test negative on Day 3, 4, or 5 following their last exposure.

- Schools are not required to verify negative test results.
- Parents are expected to test their children as required by the [public health order](#) and notify the school of positive test results.
- It is strongly recommended that exposed students wear a well-fitting mask indoors around others for at least 10 days following the date of last exposure.

Employees must wear a well-fitting mask indoors around others for at least 10 days following the date of last exposure to a person who was contagious.

Test Types By Situation

Situation	Appropriate Test Types
Person with symptoms (For initial testing in response to symptoms.)	<ul style="list-style-type: none"> • A single negative antigen result in response to an onset of symptoms is acceptable to allow return to school/work when symptoms are improving and the person has been fever-free without the use of fever-reducing medications for 24 hours. <p>For greater certainty, it is recommended (not required) that a person in this circumstance remain in isolation pending the outcome of a confirmatory test administered at least 12 hours after the first test. Antigen tests are also acceptable for this purpose. If both tests are negative, the person may end isolation when their symptoms are improving, and they have been free of fever for at least 24 hours without the use of fever-reducing medications.</p> <ul style="list-style-type: none"> • PCR or other NAAT
Return from isolation before Day 11	<ul style="list-style-type: none"> • Antigen testing is recommended for people whose symptoms are resolving to determine if they can return to school or work on Day 6 - 10. Antigen tests are less likely to detect virus beyond a person's contagious period. • PCR or other NAAT are acceptable.
Required screenings	<ul style="list-style-type: none"> • Antigen is preferred because it returns a quick result. • PCR or other NAAT

At-Home Testing

STUDENTS: Schools may accept the results of at-home testing for the same uses for which antigen tests are approved. Schools are encouraged to use a means described in the [Over-The-Counter Tests Guidance](#) to verify the results on tests administered at home. See the “What are best practices for verification of self-test results?” section for specific recommendations.

EMPLOYEES: Per Cal/OSHA, “an over-the-counter (OTC) COVID-19 test may be both self-administered and self-read if verification of the results, such as a time and date stamped photograph of the result or an OTC test that uses digital reporting with time and date stamped results, is provided.” This guidance can be found in [Cal/OSHA's FAQs under Testing](#).

STUDENTS and EMPLOYEES: When used for a person who has symptoms, the County of San Diego recommends that a negative antigen test be confirmed by a follow-up test (antigen, PCR or other NAAT) administered the following day, and that the person isolate pending the result of that test.

Public Health Notification Requirements

Per [CCR Title 17, Section 2508](#) (referenced in [CDPH school guidance](#)), “It shall be the duty of anyone in charge of a public or private school, kindergarten, boarding school, or day nursery to report at once to the local health officer the **presence or suspected presence** of any of the communicable diseases.” [CCR Section 2500](#) (also referenced in school guidance) includes COVID-19 in the list that must be reported. County public health services (PHS) has informed SDCOE that schools/employers are **required to report to PHS**, information on all positive cases that were on a school campus while infectious, including OTC results reported by parents and employees.